



KATO NK-400E-III

FULLY HYDRAULIC TRUCK CRANE

RATED LIFTING CAPACITY (1)

Based on * BS 1757:1981
* DIN 15019-2
* 75% of tipping loads

Working radius (m)	With fully extended outriggers-over side and over rear					Without outriggers over rear 11.0m Boom
	11.0 Boom	15.0 Boom	19.0 Boom	27.0 Boom	35.0 Boom	
3.0	40.00	28.00	21.00			8.00
3.5	35.00	28.00	21.00			6.40
4.0	31.50	28.00	21.00	15.00		5.10
4.5	28.50	26.60	21.00	15.00		4.20
5.0	26.00	24.40	21.00	15.00		3.40
5.4	23.80	22.50	21.00	15.00		2.90
6.0	21.50	20.50	19.10	15.00	9.00	2.30
6.5	19.80	19.00	17.70	15.00	9.00	1.90
7.0	18.20	17.70	16.50	14.00	9.00	1.60
7.5	16.70	16.50	15.45	13.10	9.00	1.25
8.0	14.90	14.70	14.50	12.30	9.00	1.00
8.5	13.40	13.20	13.00	11.55	9.00	
9.0	12.15	11.95	11.80	10.90	8.60	
10.0		9.95	9.75	9.80	8.00	
11.0		8.35	8.15	8.90	7.40	
12.0		7.00	6.80	7.65	6.80	
13.0		5.85	5.70	6.55	6.25	
14.0			4.80	5.65	5.80	
16.0			3.45	4.25	4.60	
18.0				3.20	3.60	
20.0				2.40	2.85	
22.0				1.80	2.20	
24.0				1.30	1.70	
26.0					1.30	
28.0					1.00	
30.0					0.70	
Standard hook	for 40 tons		for 20 tons		for 40 tons	
Hook weight	450kg		270kg		450kg	
Parts of line	10	7	6	4	3	10
Critical boom angle					20°	

(Unit: metric ton)

JOB RATED LIFTING CAPACITY (2)

Boom angle (°)	With fully extended outriggers-over side and over rear					
	9.2m Jib			15.0m Jib		
	offset 5'	offset 17'	offset 30'	offset 5'	offset 17'	offset 30'
81	4.00	3.00	2.00	2.70	1.60	1.20
79	4.00	3.00	2.00	2.70	1.60	1.20
77	4.00	3.00	2.00	2.45	1.60	1.20
76	3.86	2.90	2.00	2.30	1.60	1.20
74	3.50	2.67	2.00	2.06	1.51	1.20
72	3.18	2.47	2.00	1.87	1.40	1.16
70	2.91	2.30	1.88	1.70	1.28	1.08
68	2.68	2.15	1.78	1.56	1.20	1.01
66	2.48	2.01	1.70	1.43	1.12	0.99
64	2.32	1.90	1.60	1.33	1.07	0.97
62	2.06	1.78	1.53	1.22	1.03	0.95
60	1.75	1.62	1.46	1.13	1.00	0.93
58	1.45	1.37	1.30	1.06	0.99	0.92
56	1.20	1.16	1.08	0.98	0.90	0.83
54	0.98	0.95	0.87	0.76	0.71	0.67
52	0.78	0.76	0.71	0.58	0.57	0.55
50	0.60	0.60	0.55	0.45	0.45	0.45
48	0.45	0.43	0.40			
Critical boom angle	47°	47°	47°	49°	49°	49°
Standard hook	for 4 tons (120kg weight)					

(Unit: metric ton)

(Notes)

1) The rated lifting capacities indicate the maximum guaranteed load for this model operating on a firm level ground. They include the weight of hook block and other hoisting equipments. The figures in the blue areas are based on the mechanical strength of the crane.

Hook	for 40 ton	for 20 ton	for 4 ton
Weight (kg)	450	270	120

2) The working radii as given in table are the actual values including the deflection of booms and jibs.

Therefore operate the crane based on the working radius. However, jib operation should be performed in accordance with the boom angle.

3) The rated lifting capacities for operation without outrigger are based on best condition of the tire air pressure and the ground surface.

4) The rated lifting capacities for the rooster sheave are equivalent to the rated lifting capacities for the boom with an upper limit of 4,000 kg. However, when hoisting equipment, etc., is attached to the boom, the weight of the hoisting equipment (ex. hook block for rooster sheave) plus the weight of the hoisting equipment attached to the boom (ex. hook block for main boom) should be subtracted from the rated lifting capacities.

5) If the boom length exceeds the specified value, refer to the rated lifting capacities for the boom length and the next highest boom length. The crane should be operated within the smaller lifting capacity.

6) When using the boom with the jib installed, 2,000 kg plus the hoisting equipment, etc., should be subtracted from the rated lifting capacities. The rooster sheave should not be used.

7) Critical boom angles for each boom length are shown bottommost line. If the boom angle is lowered to less than critical boom angle, the crane will tip over. Therefore, never lower the boom below these angles.

8) The standard number of parts of line is shown in the rated lifting capacity tables. When the standard number of parts of line is not used, the minimum number of parts of line is determined so that weight per part will not exceed 4000 kg.

9) In principal, free fall should only be allowed with the hook only, but when free fall under laden conditions cannot be avoided, a limit of 20% of the rated lifting capacity should be set and sudden braking must be avoided at all costs.

10) Over front lifting performance is inferior to over side/over rear lifting performance. Great care should be taken when transferring from over side to over front since there is a danger of overloading.

11) When optional front jack is extended, over front performance is the same as over side/over rear performance. Therefore, in case outriggers are fully extended, please refer to the Rated lifting capacity table (1) and (2).

In case outriggers are intermediately extended, please refer to the Rated lifting capacity table (3) and (4).

Pakistan Head Office:
G.T Road, Islamabad,
Pakistan
+92-51-2226055

Pakistan Site Office:
Main National Highway
Abdullah Gott, Razzaqabad
Karachi

UAE Office:
Auto Link International General Trading L.L.C.,
Industrial Area 13, Yard No.6, Sharja UAE,
P.O Box: 83906, +971527777465

Qatar Office:
Auto Link International
Trading & Equipment W.L.L.,
P.O Box: 40213, C.R No. 71034
Doha Qatar, +97450024747



AUTO LINK INTERNATIONAL

Import, Sales & Rental Services of Construction Heavy Machinery

RATED LIFTING CAPACITY (3)

With intermediately extended outriggers-360° full range With fully extended outriggers-over front					
Working radius (m)	11.0m Boom	15.0 Boom	19.0 Boom	27.0 Boom	35.0 Boom
3.0	24.00	20.00	16.00		
3.5	24.00	20.00	16.00		
4.0	24.00	20.00	16.00	12.00	
4.5	24.00	20.00	16.00	12.00	
5.0	22.00	20.00	16.00	12.00	
5.5	17.20	16.80	16.00	12.00	
6.0	13.85	13.50	13.30	12.00	6.00
6.5	11.50	11.20	10.95	12.00	6.00
7.0	9.70	9.45	9.20	10.25	6.00
7.5	8.30	8.00	7.80	8.80	6.00
8.0	7.15	6.85	6.65	7.65	6.00
8.5	6.20	5.90	5.70	6.70	6.00
9.0	5.30	5.10	4.95	5.90	6.00
10.0		3.90	3.70	4.60	5.10
11.0		2.95	2.80	3.65	4.10
12.0		2.20	2.00	2.90	3.35
13.0		1.60	1.40	2.30	2.70
14.0				1.80	2.20
15.0				1.40	1.80
16.0					1.40
17.0					1.10
Standard hook	for 40 tons			for 20 tons	
Hook weight	450kg			270kg	
Parts of line	10	7	6	4	3
Critical boom angle			37°	52°	57°

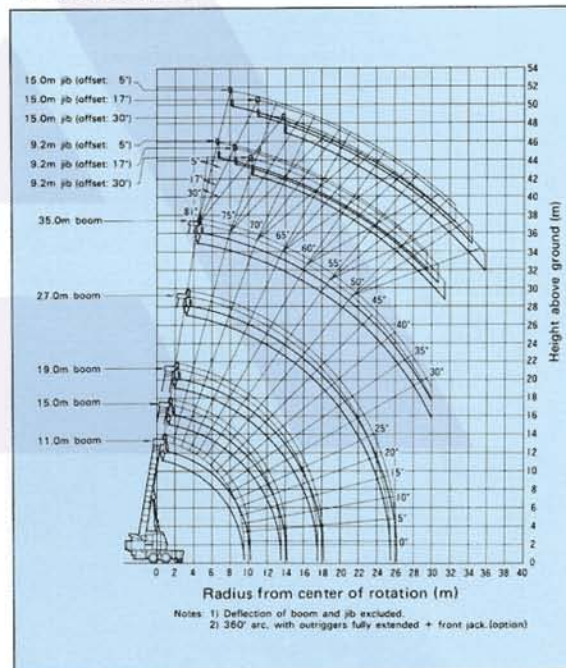
(Unit: metric ton)

JOB RATED LIFTING CAPACITY (4)

With intermediately extended outriggers-360° full range With fully extended outriggers-over front						
Boom angle (°)	9.2m Jib			15.0m Jib		
	Offset 5°	Offset 17°	Offset 30°	Offset 5°	Offset 17°	Offset 30°
81	4.00	3.00	2.00	2.70	1.60	1.20
79	4.00	3.00	2.00	2.70	1.60	1.20
77	3.50	3.00	2.00	2.45	1.60	1.20
76	3.15	2.66	2.00	2.30	1.60	1.20
75	2.82	2.35	2.00	2.18	1.59	1.20
74	2.50	2.08	1.80	1.86	1.51	1.20
73	2.21	1.81	1.56	1.63	1.33	1.07
72	1.95	1.57	1.37	1.42	1.15	0.91
70	1.43	1.15	1.03	1.05	0.85	0.72
68	1.00	0.80	0.75			
Critical boom angle	67°	67°	67°	69°	69°	69°
Standard hook	for 4 tons (120kg weight)					

(Unit: metric ton)

WORKING RANGES



Pakistan Head Office:
G.T Road, Islamabad,
Pakistan
+92-51-2226055

Pakistan Site Office:
Main National Highway
Abdullah Gott, Razzaqabad
Karachi

UAE Office:
Auto Link International General Trading L.L.C,
Industrial Area 13, Yard No.6, Sharja UAE,
P.O Box: 83906, +971527777465

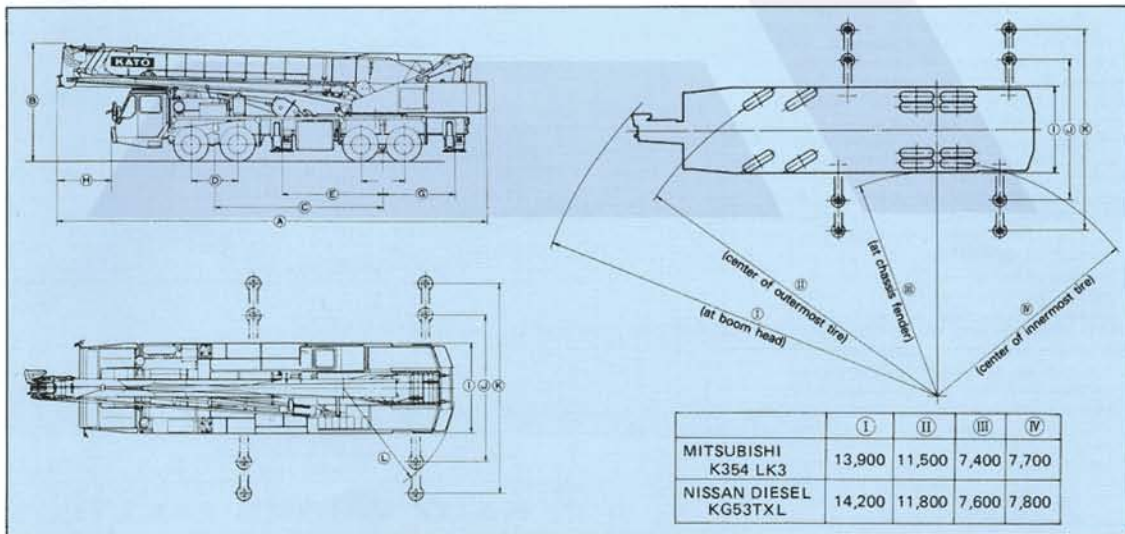
Qatar Office:
Auto Link International
Trading & Equipment W.L.L.,
P.O Box: 40213, C.R No. 71034
Doha Qatar, +97450024747



SUPERSTRUCTURE SPECIFICATIONS

Name and Type	KATO NK-400E-III FULLY HYDRAULIC CRANE
Performance	40.0t x 3.0m 11m Boom with outriggers over side and over rear 28.0t x 4.0m 15m Boom with outriggers over side and over rear 21.0t x 5.4m 19m Boom with outriggers over side and over rear 15.0t x 6.5m 27m Boom with outriggers over side and over rear 9.0t x 8.5m 35m Boom with outriggers over side and over rear 4.0t Rooster sheave outriggers over side and over rear
Crane Capacity	4.0t x 77° 9.2m jib (offset 5') outriggers over side and over rear 3.0t x 77° 9.2m jib (offset 17') outriggers over side and over rear 2.0t x 72° 9.2m jib (offset 30') outriggers over side and over rear 2.7t x 79° 15.0m jib (offset 5') with outriggers over side and over rear 1.6t x 76° 15.0m jib (offset 17') with outriggers over side and over rear 1.2t x 74° 15.0m jib (offset 30') with outriggers over side and over rear 8.0t x 3.0m 11m Boom over side and over rear
Boom length	Basic 11m Max. 35m
Jib length	9.2 – 15m
Max. lifting height	34.8m (35m Boom) 49.7m (35m Boom + 15.0m Jib)
Main hoisting line speed	119m/min (3rd layer)
Auxiliary hoisting line speed	111m/min (2nd layer)
Main hook hoisting speed	11.9m/min (3rd layer, 10-parts of line)
Auxiliary hook hoisting speed	11.1m/min (2nd layer, 1-part of line)
Boom derricking time	43sec (-2°~81°)
Boom derricking angle	-2° - 81°
Slewing speed	2.3r.p.m.

Hydraulic System	
Hydraulic pump	High pressure gear type, 3 section
Hoisting motor	Axial piston type
Slewing motor	Axial piston type
Control valve	Multiple automatic return type
Cylinder	High-pressure doubleacting type
Superstructure	
Hoisting device	Hydraulic motor-driven planetary gear speed reduction type (with free fall device and automatic brake system) Single winch x 2
Slewing device	Hydraulic motor-driven cycloid gear speed reduction type with built-in negative brakes and free/lock switching
Slewing circle	Ball bearing type
Boom derricking device	Direct-acting cylinder type
Outrigger system	Hydraulic, vertically supporting with float and vertical cylinder in single unit
Front jack (option)	Hydraulic, vertically supporting with float and vertical cylinder in single unit
Hoisting Ropes	
Main	U4 x ses (39) φ 18 x 160m
Auxiliary	U4 x ses (39) φ 18 x 110m
Safety Device	
Microcomputer type ACS fully automatic overload protection device (Moment Limiter), Boom free fall prevention device, Overhoisting prevention device, Drum lock device, Drum hold safety device, Automatic brake, Irregular winding prevention device, Hydraulic circuit safety system, Outrigger lock device, Boom angle indicator, Slewing lock system	
Option	
Cooler Voice alarm Radio Fan Heater Front jack	Crane cabin



Carrier name and model	A	B	C	D	E	F	G	H	I	J	K	L
MITSUBISHI K354 LK3	13,450	3,750	5,250	1,450	3,150	1,350	2,250	1,780	2,750	4,600	6,600	3,520
NISSAN DIESEL KG53TXL	13,470	3,700	5,215	1,470	3,350	1,400	2,100	2,290	2,820	4,600	6,600	3,520

Pakistan Head Office:
G.T Road, Islamabad,
Pakistan
+92-51-2226055

Pakistan Site Office:
Main National Highway
Abdullah Gott, Razaqabad
Karachi

UAE Office:
Auto Link International General Trading L.L.C,
Industrial Area 13, Yard No.6, Sharja UAE,
P.O Box: 83906, +971527777465

Qatar Office:
Auto Link International
Trading & Equipment W.L.L.,
P.O Box: 40213, C.R No. 71034
Doha Qatar, +97450024747



AUTO LINK INTERNATIONAL

Import, Sales & Rental Services of Construction Heavy Machinery

KATO NK-400E-III

FULLY HYDRAULIC TRUCK CRANE

CARRIER SPECIFICATIONS

MITSUBISHI K354LK3

Maximum traveling speed	75km/h
Gradeability (tan θ)	31.1% (computed, @ G.V.W. = 35800kg)
Minimum turning radius (center of extreme outer tire)	11.5m

General dimensions

Overall length	approx. 13450mm
Overall width	approx. 2750mm
Overall height	approx. 3750mm
Wheel base	5250mm
Treads	Front 2040mm
	Rear 1845mm
Center to center of extended outriggers	6600mm (Fully extended)
	4600mm (Intermediately extended)
Gross weight	approx. 35800kg
	Front approx. 12800kg
	Rear approx. 23000kg

Carrier

Maker	MITSUBISHI
Model	K354LK3
Drive system	8 x 4

Engine

Maker	MITSUBISHI
Model	8DC8-2A
Type	4 cycle, water cooled, diesel
Number of cylinder	8 - 90° V
Piston displacement	14886cc
Max. output horsepower	290 ps/2300 r.p.m.
	213 kw/2300 r.p.m.
Max. output torque	99 kg-m/1400 r.p.m.
	970 N-m/1400 r.p.m.
Clutch	Single dry plate, hydraulic control with air booster
Transmission	10 forward & 2 reverse speed synchromesh and constantmesh gear
Axles	Front Reverse "ELLIOT" type
	Rear Full floating type
Steering	Ball nut type with power booster
Suspension	Front Semi-elliptic leaf springs
	Rear Equalizer beams and torque rods
Brake	Service 2 circuit air brake, 8 wheels internal expanding type
	Parking Spring loaded brake, acting on 4 rear wheels variable air operated
Auxiliary	Exhaust brake
Electric system	24V
Battery	12V - 140AH x 2
Fuel tank capacity	300 lit.
Driver's cab	All steel welded construction 2 persons, low line type
Tire size	Front 11.00 - 20 - 16 PR
	Rear (dual tire) 11.00 - 20 - 16 PR

Note : The output is in accordance with JIS D1004, 1976. Rated power output guaranteed within 15% at standard ambient condition.

NISSAN DIESEL KG53TXL

Maximum traveling speed	68km/h
Gradeability (tan θ)	29% (computed, @ G.V.W. = 35700kg)
Minimum turning radius (center of extreme outer tire)	11.8m

General dimensions

Overall length	approx. 13470mm
Overall width	approx. 2820mm
Overall height	approx. 3700mm
Wheel base	5215mm
Treads	Front 2270mm
	Rear 2110mm
Center to center of extend outriggers	6600mm (Fully extended)
	4600mm (Intermediately extended)
Gross weight	approx. 35700kg
	Front approx. 13400kg
	Rear approx. 22300kg

Carrier

Maker	NISSAN DIESEL
Model	KG53TXL
Drive system	8 x 4

Engine

Maker	NISSAN DIESEL
Model	RE8
Type	4 cycle, water cooled, diesel
Number of cylinder	8 - V
Piston displacement	15115 cc
Max. output horsepower	315 ps/2300 r.p.m.
	231 kw/2300 r.p.m.
Max. output torque	105 kg-m/1400 r.p.m.
	1029 N-m/1400 r.p.m.

Note: The output is in accordance with JIS D1004, 1976. Rated power output guaranteed within 5% at standard ambient condition.

Clutch	Single dry plate, hydraulic control with air booster
Transmission	5 forward & 1 reverse speed, synchromesh and constantmesh gear
Axles	Front Reverse "ELLIOT" type
	Rear Full floating type
Steering	Ball nut type with power booster
Suspension	Front Semi-elliptic leaf springs
	Rear Equalizer beams and torque rods
Brake	Service 2 circuit air brake, 8 wheels internal expanding type
	Parking Mechanical, internal expanding type acting on drum at transmission case rear
Auxiliary	Exhaust brake
Electric system	24V
Battery	12V - 120AH x 2
Fuel tank capacity	300 lit.
Driver's cab	Steel, two men, semi under floor type, one side cab
Tire size	Front 11.00 - 20 - 16 PR
	Rear (dual tire) 11.00 - 20 - 16 PR

KATO products and specifications are subject to improvements and changes without notice.



KATO WORKS CO.,LTD.

9-37, Higashi-ohi 1-chome, Shinagawa-ku, Tokyo, 140 Japan
 Phone : Head Office Tokyo (03) 3458-1111
 Export Dept. Tokyo (03) 3458-1115
 Telex : 222-4519 (CRKATO J)
 Fax : Tokyo (03) 3458-1152
 Cable : CRANEKATO TOKYO

LCNK-400E-III-2-KEX
 910105(Hp) Printed in Japan

Pakistan Head Office:
 G.T Road, Islamabad,
 Pakistan
 +92-51-2226055

Pakistan Site Office:
 Main National Highway
 Abdullah Gott, Razzaqabad
 Karachi

UAE Office:
 Auto Link International General Trading L.L.C.,
 Industrial Area 13, Yard No.6, Sharja UAE,
 P.O Box: 83906, +971527777465

Qatar Office:
 Auto Link International
 Trading & Equipment W.L.L.,
 P.O Box: 40213, C.R No. 71034
 Doha Qatar, +97450024747